



PRECISION INDUSTRIAL FITTINGS



**Made In
the U.S.A.**

Available In
304 Stainless Steel
Carbon Steel
Aluminum



2018

Precision Industrial Fittings Specification & Pricing Guide



Call: 419-692-6085

701 Ambrose Drive - Delphos, OH 45833
(p) 419-692-6085 - (f) 419-692-3260

www.vanamatic.com

www.vanamaticpi.com

August 1, 2018

Dear Valued Customers,

The attached price sheet reflects new pricing effective Sept. 1st, 2018. These price adjustments have been reviewed carefully and reflect changes in piece price due to several raw material price increases along with the consideration of annual volumes. Some less popular fittings have not reached the intended volumes we anticipated and therefore needed the appropriate adjustments.

One area that you will find that is effected the most is with the aluminum fittings. These volumes have never developed to the levels needed to run on more effecient equipemnt and therefore all needed to run on CNC machines.

We appreciate your business and are here to help in any way we can. Listed below are the contacts for the appropriate personnel.

Sales: Steve Schroeder, steves@vanamatic.com

Customer Service: Judy Spieles, judys@vanamatic.com

Engineering: Jared Wiltsie, jaredw@vanamatic.com

Accounts Receivable: AR@vanamatic.com

Phone: 419-692-6085

Fax: 419-692-3260

Thank you for the continued business. If you have any questions, please do not hesitate to call our team for support.

Sincerely,

Steve K. Schroeder
Director of Marketing & Sales

General Specifications

Dimensions to ANSI 16.3 Pressure to ANSI 16.5 Class 150LB

Standard Steel Material Specification – C1215 and C12L14 - ASTM A108, ASTM A29

Standard Stainless Steel Material Specification – Type 304 - ASTM A276

Standard Aluminum Material Specifications – Type 2024-T351 – ASTM-B211

Steel Parts – Bright Trivalent Plated Per ASTM B633 Service Condition I, Type II - (Yellow) Type III – (Clear) - ROHS Compliant

Stainless Steel Parts – (Clean and Dry, No Passivation or Electropolish) - ROHS Compliant

Aluminum Fittings – Clear Conventional Type II Sulfuric Anodize - ROHS Compliant

Fittings for use with Air, Water, and Oil

Twist Jaw Hose Coupling for use with Air and Water. (Do not use in Steam applications)

Hose Type: Rubber and Plastic – (See hose manufacturer specifications for compatibility)

Clamps: Use band, worm-drive, or malleable bolt clamps

Maximum Pressure: Fittings - 150PSI @72°F

Twist Jaw Couplings – 110PSI @72°F - Maximum Temperature: 110°F

Hose to Pipe Temperature Range: -40°F to +350°F (See hose mfg. specifications)

Hose to Hose Temperature Range: -40°F to +350°F (See hose mfg. specifications)

Hose to Pipe Vacuum Range: 29" Hg @ 72°F (See hose mfg. specifications)

Hose to Hose Vacuum Range: 29" Hg @ 72°F (See hose mfg. specifications)

Distributors/Resellers: shall make Seller's Specifications available to third party purchasers of Seller's products.

Quantity Breaks: 10% Discount for order quantities between 100 - 249 pcs.; 25% discount for order quantities between 250 - 500 pcs. Call for quantities over 500 pcs.

Terms and Conditions of Sale

Acceptance: Vanamatic Company (“Seller”) agrees to sell materials, products, and/or any other item (“Goods”) to the customer (“Buyer”) based on the terms and conditions herein described. The pricing for the Goods are based on these terms and only applicable to these terms unless otherwise specified.

Title and Risk of Loss: Prices quoted are F.O.B. Seller’s facility unless otherwise agreed upon and specified in the Seller’s quotation. Title and risk of loss or damage to the Goods shall pass to the Buyer as soon as the finished Goods leave the control of the Seller. Seller shall have a security interest in the Goods until full payment has been made by the Buyer.

Taxes & Prices: Any local, state, U.S federal or foreign taxes or duties on the Goods shall be added to the price and paid by the buyer. All pricing is USD.

Payment Terms: Prices quoted require payment within thirty (30) days after the date of invoice, unless otherwise agreed upon and specified in the Seller’s quotation. Buyer may select and pay within the discount terms without affecting the quoted prices.

- Terms: 1% 10 Calendar Days – Net 30 Calendar Days
- Prepayment for 6 months on all orders following a late payment

Laws, Ordinances, and Regulations: Prices quoted cover normal laws, ordinances, and regulations as Seller may be accustomed to during the normal manufacture of products. Seller shall utilize reasonable efforts to cause the manufacture of goods to comply with its interpretation of applicable U.S. federal and state, safety, health, and environmental regulations. However, Seller shall not be responsible for any applicable laws, ordinances, codes, and/or regulations at any location where Goods are utilized by Buyer or Buyer’s customers, unless otherwise agreed upon and specified in the Seller’s quotation. The sale of Goods by Seller shall be governed by the laws of the State of Ohio.

Liability: Seller shall not be liable for any act, omission, result or consequence due to any act of God, casualty, labor dispute, shortage of material, loss of utilities, failure to deliver, and/or any other cause beyond Seller’s reasonable control. Seller does not provide warranties or accept financial liability beyond that described in this document, unless otherwise agreed upon and specified in the Seller’s quotation.

General Specifications: Distributors/Resellers and purchasers shall comply with Seller’s General Specification page of this document.

Quality Rejects: Seller warrants that Goods are in accordance with the provisions specified in this document. Seller agrees to inspect, repair, or replace, at Seller’s option, goods that fail to conform to provisions specified in this document. Seller shall not be responsible for freight charges in excess of those agreed upon and used in the normal transportation of the Goods to the Buyer. The Seller and Buyer may agree to inspection charges by the Buyer and/or a third party inspection firm without effect to the terms of this policy.

Warranty and Product Recall: Unless otherwise agreed upon and specified in the Seller’s quotation, prices quoted do not include liability for any costs over and above those detailed in the Quality Rejects section of this document. Buyer assumes liability for any and all warranty claims and product recall obligations relating to the Seller’s Goods.

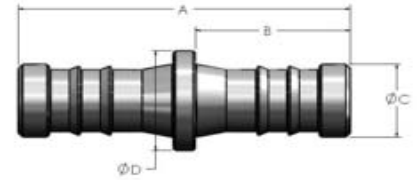
Return and Restocking: Products purchased from Vanamatic Company, except special orders, may be returned within 30 days without being subject to a restocking fee. Original shipping and handling fees will not be refunded and return shipments must be prepaid. A Return Material Authorization Number (RMA) must be requested prior to any return. Returns after 30 days are subject to a 15% restocking fee. Special orders cannot be returned.

Indemnity: Purchaser shall indemnify and save harmless and defend Seller, its subsidiaries, division and affiliates, and their directors, officers, employees and agents from and against any and all claims, demands, actions, causes of action, losses, damages, liability and costs (including reasonable attorney’s fees, taxes, penalties and interest (collectively “Claims”), of any nature whatsoever, for loss of or damage to property (whether same be that of third persons or of either of the parties hereto) and for injury to or death of persons (whether they be third persons or employees of Buyer, any subcontractor or material men) in any manner arising out of incident to the sale and delivery of goods, except for loss, damage or injury caused solely by an act of negligence by Seller.

Precision Industrial Fittings

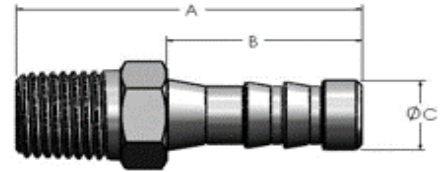


Standard Duty Band Couplings

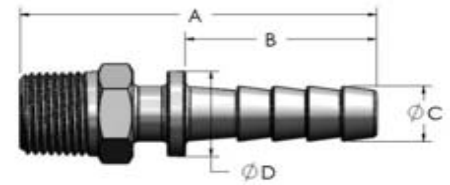


Description	Length (A)	Length (B)	Dia. (C)	Dia. (D)	--	Bore Size	Min. Qty.	Steel		Aluminum		304 Stainless Steel	
								Part No.	Price/Ea	Part No.	Price/Ea	Part No.	Price/Ea
1/4" Hose to 1/4" Hose	2 1/4"	1.050	0.300	0.500		0.160	25	1110	\$7.25	1111	\$12.93	1114	\$18.34
3/8" Hose to 3/8" Hose	2 1/4"	1.050	0.425	0.625		0.250	50	1330	\$2.98	1331	\$11.53	1334	\$10.15
1/2" Hose to 1/2" Hose	2 1/4"	1.050	0.500	0.750		0.380	50	1440	\$2.68	1441	\$7.03	1444	\$6.77
5/8" Hose to 5/8" Hose	3 3/8"	1.550	0.675	0.875		0.500	50	1550	\$5.67	1551	\$10.37	1554	\$15.46
3/4" Hose to 3/4" Hose	3 3/8"	1.550	0.800	1.000		0.560	25	1660	\$4.30	1661	\$12.71	1664	\$14.96
1" Hose to 1" Hose	3 3/8"	1.550	1.050	1.250		0.750	25	1770	\$4.97	1771	\$15.64	1774	\$18.29
1 1/4" Hose to 1 1/4" Hose	3 3/8"	1.550	1.300	1.500		0.940	25	1880	\$11.96	1881	\$23.34	1884	\$31.84

Standard Barbed Nipple - Male NPT

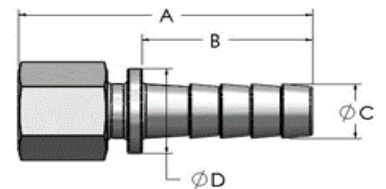


Description	Length (A)	Length (B)	Dia. (C)	--	Stock Size	Bore Size	Min. Qty.	Steel		Aluminum		304 Stainless Steel	
								Part No.	Price/Ea	Part No.	Price/Ea	Part No.	Price/Ea
1/4" Hose to 1/8" NPT	1 11/16"	1.050	0.300		9/16" H	0.160	50	2120	\$2.52	2121	\$3.76	2124	\$7.32
1/4" Hose to 1/4" NPT	1 7/8"	1.050	0.300		9/16" H	0.160	50	2130	\$2.05	2131	\$3.62	2134	\$7.55
1/4" Hose to 3/8" NPT	1 7/8"	1.050	0.300		11/16" H	0.160	50	2140	\$2.19	2141	\$6.24	2144	\$9.36
5/16" Hose to 1/4" NPT	1 7/8"	1.050	0.362		9/16" H	0.220	50	2230	\$2.63	2231	\$5.34	2234	\$6.31
3/8" Hose to 1/8" NPT	1 11/16"	1.050	0.425		9/16" H	0.250	50	2320	\$1.90	2321	\$5.48	2324	\$6.30
3/8" Hose to 1/4" NPT	1 7/8"	1.050	0.425		9/16" H	0.250	50	2330	\$2.01	2331	\$3.78	2334	\$6.44
3/8" Hose to 3/8" NPT	1 7/8"	1.050	0.425		11/16" H	0.250	50	2340	\$2.20	2341	\$3.69	2344	\$7.27
3/8" Hose to 1/2" NPT	2 1/8"	1.050	0.425		7/8" H	0.250	50	2350	\$2.86	2351	\$7.00	2354	\$10.56
1/2" Hose to 1/4" NPT	1 7/8"	1.050	0.550		9/16" H	0.380	50	2430	\$2.07	2431	\$3.13	2434	\$5.74
1/2" Hose to 3/8" NPT	1 7/8"	1.050	0.550		11/16" H	0.380	50	2440	\$2.70	2441	\$4.01	2444	\$6.10
1/2" Hose to 1/2" NPT	2 1/8"	1.050	0.550		7/8" H	0.380	50	2450	\$2.81	2451	\$5.42	2454	\$9.01
1/2" Hose to 3/4" NPT	2 3/16"	1.050	0.550		1 1/8" H	0.380	25	2460	\$3.71	2461	\$12.24	2464	\$14.21
3/4" Hose to 1/2" NPT	2 5/8"	1.550	0.800		7/8" H	0.560	25	2650	\$3.14	2651	\$7.90	2654	\$10.39
3/4" Hose to 3/4" NPT	2 11/16"	1.550	0.800		1 1/8" H	0.560	25	2660	\$3.91	2661	\$11.68	2664	\$14.14
3/4" Hose to 1" NPT	2 15/16"	1.550	0.800		1 3/8" H	0.560	25	2670	\$5.14	2671	\$15.26	2674	\$21.67
1" Hose to 3/4" NPT	2 11/16"	1.550	1.050		1 1/8" H	0.690	25	2760	\$3.83	2761	\$11.68	2764	\$14.30
1" Hose to 1" NPT	2 15/16"	1.550	1.050		1 3/8" H	0.750	25	2770	\$5.08	2771	\$15.91	2774	\$21.06



Heavy Duty Barbed Nipple - Male NPT

Description	Length (A)	Length (B)	Dia. (C)	Dia. (D)	Stock Size	Bore Size	Min. Qty.	Steel		Aluminum		304 Stainless Steel	
								Part No.	Price/Ea	Part No.	Price/Ea	Part No.	Price/Ea
1/4" Hose to 1/8" NPT	2 1/16"	1.130	0.312	0.550	9/16" H	0.160	25	4120	\$4.60	4121	\$10.91	4124	\$9.52
1/4" Hose to 1/4" NPT	2 1/4"	1.130	0.312	0.550	9/16" H	0.160	25	4130	\$2.48	4131	\$5.91	4134	\$9.27
1/4" Hose to 3/8" NPT	2 1/4"	1.130	0.312	0.550	11/16" H	0.160	25	4140	\$5.34	4141	\$12.10	4144	\$10.37
5/16" Hose to 1/4" NPT	2 1/4"	1.130	0.375	0.610	9/16" H	0.190	25	4230	\$4.66	4231	\$10.08	4234	\$11.07
3/8" Hose to 1/8" NPT	2 3/8"	1.380	0.437	0.680	11/16" H	0.220	25	4320	\$5.60	4321	\$9.52	4324	\$11.88
3/8" Hose to 1/4" NPT	2 9/16"	1.380	0.437	0.680	11/16" H	0.220	25	4330	\$2.64	4331	\$9.20	4334	\$10.78
3/8" Hose to 3/8" NPT	2 9/16"	1.380	0.437	0.680	11/16" H	0.220	25	4340	\$3.67	4341	\$8.74	4344	\$12.69
3/8" Hose to 1/2" NPT	2 13/16"	1.380	0.437	0.680	7/8" H	0.220	25	4350	\$5.46	4351	\$12.41	4354	\$14.63
1/2" Hose to 1/4" NPT	2 3/4"	1.560	0.562	0.870	7/8" H	0.310	25	4430	\$5.73	4431	\$12.84	4434	\$13.77
1/2" Hose to 3/8" NPT	2 3/4"	1.560	0.562	0.870	7/8" H	0.310	25	4440	\$3.26	4441	\$12.84	4444	\$12.87
1/2" Hose to 1/2" NPT	3"	1.560	0.562	0.870	7/8" H	0.310	25	4450	\$4.03	4451	\$14.18	4454	\$12.39
1/2" Hose to 3/4" NPT	3 1/16"	1.560	0.562	0.870	1 1/8" H	0.310	25	4460	\$9.02	4461	\$15.30	4464	\$18.64
3/4" Hose to 1/2" NPT	3 9/16"	2.000	0.812	1.120	1 1/8" H	0.500	25	4650	\$5.29	4651	\$17.70	4654	\$22.68
3/4" Hose to 3/4" NPT	3 9/16"	2.000	0.812	1.120	1 1/8" H	0.500	25	4660	\$5.01	4661	\$17.94	4664	\$19.94
3/4" Hose to 1" NPT	3 13/16"	2.000	0.812	1.120	1 3/8" H	0.500	25	4670	\$11.22	4671	\$22.83	4674	\$27.60
1" Hose to 3/4" NPT	3 9/16"	2.000	1.062	1.370	1 3/8" H	0.690	25	4760	\$10.81	4761	\$21.65	4764	\$25.40
1" Hose to 1" NPT	3 13/16"	2.000	1.062	1.370	1 3/8" H	0.750	25	4770	\$11.84	4771	\$23.77	4774	\$28.08



Heavy Duty Barbed Nipple - Female NPT

Description	Length (A)	Length (B)	Dia. (C)	Dia. (D)	Stock Size	Bore Size	Min. Qty.	Steel		Aluminum		304 Stainless Steel	
								Part No.	Price/Ea	Part No.	Price/Ea	Part No.	Price/Ea
1/4" Hose to 1/8" NPT	2 3/16"	1.130	0.312	0.550	9/16" H	0.160	25	5120	\$5.84	5121	\$7.16	5124	\$11.37
1/4" Hose to 1/4" NPT	2 3/16"	1.130	0.312	0.550	11/16" H	0.160	25	5130	\$5.75	5131	\$8.07	5134	\$11.71
3/8" Hose to 1/4" NPT	2 1/2"	1.380	0.437	0.680	11/16" H	0.220	25	5330	\$5.08	5331	\$8.85	5334	\$12.27
3/8" Hose to 3/8" NPT	2 9/16"	1.380	0.437	0.680	7/8" H	0.220	25	5340	\$7.60	5341	\$10.57	5344	\$13.84
3/8" Hose to 1/2" NPT	2 3/4"	1.380	0.437	0.680	1 1/8" H	0.220	25	5350	\$8.46	5351	\$15.32	5354	\$20.58
1/2" Hose to 3/8" NPT	2 3/4"	1.560	0.562	0.870	7/8" H	0.310	25	5440	\$7.08	5441	\$13.28	5444	\$13.13
1/2" Hose to 1/2" NPT	2 15/16"	1.560	0.562	0.870	1 1/8" H	0.310	25	5450	\$10.78	5451	\$18.16	5454	\$20.93
3/4" Hose to 1/2" NPT	3 7/16"	2.000	0.812	1.120	1 1/8" H	0.500	25	5650	\$11.04	5651	\$16.97	5654	\$19.49
3/4" Hose to 3/4" NPT	3 9/16"	2.000	0.812	1.120	1 3/8" H	0.500	25	5660	\$11.43	5661	\$20.89	5664	\$28.50

Hy-Way Quick Acting Hose and Pipe Couplings



Description	Steel			
	Min. Qty.	Body No.	Part No.	Price/Ea
1 1/4" Female NPT	5	150	125	\$31.00
1 1/2" Female NPT	5	150	150	\$31.00
2" Female NPT	5	200	200	\$38.50
1 1/4" Male NPT	5	150	125M	\$35.25
1 1/2" Male NPT	5	150	150M	\$35.25
2" Male NPT	5	200	200M	\$42.50
150 Body Rubber Gasket	10	--	1250	\$13.50
200 Body Rubber Gasket	10	--	2000	\$13.50

Not Available In
Aluminum & Stainless Steel